



# Chart Ferox Eurocyl high pressure vessels



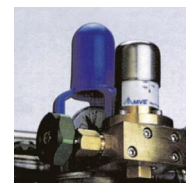
The All-Purpose Gas Transport, Storage and Supply Vessels

**Easy to Use:** Ideal for transportable or stationary gas supply. Automatic pressure building and gas economizer systems. All valves and instruments within easy reach and visibility. Stable low center of gravity. European Ready ... TPED coded.

**Superior Performance:** Rugged, maneuverable and fast filling. Gas and/or liquid withdrawal. Continuous flow rates up to 10,5 Nm<sup>3</sup>/h.

**Cost Effective:** Super-insulation provides long holding time and low Nominal Evaporation Rate. All stainless steel vessels and patented inner support system for durability and long life. Heavy-duty footing and large diameter handling ring with four supports.

**LCCM Models:** Dual function regulator controls pressure building and gas economizing. Eliminates copper piping and fittings. Easy to set and adjust pressure-control knob.



## PRODUCT SPECIFICATIONS

Type		180 / 24	230/24 SB*
<b>Capacity</b>			
Liquid (gross)	(liters)	196	240
Liquid (net)	(liters)	186	228
Gas (N <sup>2</sup> )**	(Nm <sup>3</sup> )	98	120
Gas (O <sup>2</sup> )**	(Nm <sup>3</sup> )	126	154
Gas (Ar)**	(Nm <sup>3</sup> )	123	151
Gas (CO <sup>2</sup> )**	(Nm <sup>3</sup> )	104	128
Gas (N <sup>2</sup> O)**	(Nm <sup>3</sup> )	96	118
<b>Performance</b>			
NER**** (N <sup>2</sup> )	(% per day)	1,9	1,8
NER (O <sup>2</sup> - AR)	(% per day)	1,3	1,2
NER (CO <sup>2</sup> - N <sup>2</sup> O)	(% per day)	0,5	0,5
Gas Flow (N <sup>2</sup> , O <sup>2</sup> , Ar)	(Nm <sup>3</sup> /hr)	9,2	10,5
Gas Flow (CO <sup>2</sup> or N <sup>2</sup> O)	(Nm <sup>3</sup> /hr)	2,9	2,9
Relief Valve Setting	(bar)	24	24
Code		TPED (EN 1251)	TPED (EN 1251)
<b>Dimensions</b>			
Tank Diameter	(mm)	508	660
Base Type		footring	mini-pallet
Base Size	(mm)	508	715 x 715
Height	(mm)	1622	1389
Empty Weight	(kg)	135	189
Maximum Full Weight ***	N <sup>2</sup> (kg)	285	373
	O <sup>2</sup> (kg)	347	449
	Ar (kg)	394	507
	CO <sup>2</sup> (kg)	354	458
	N <sup>2</sup> O (kg)	331	429

\* Option: Casters and towing handle (adds approximately 130 mm to overall height and 10 kg to overall weight)

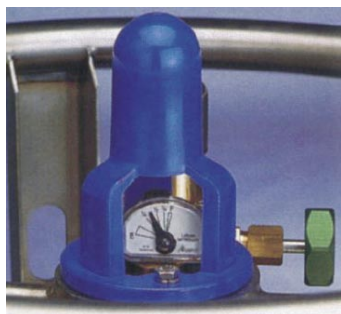
\*\* At 10 bar pressure

\*\*\* Tank plus product at saturated pressure 0 bar for O<sub>2</sub>, N<sub>2</sub>, Ar and triple point for CO and N<sub>2</sub>O 2 2 2

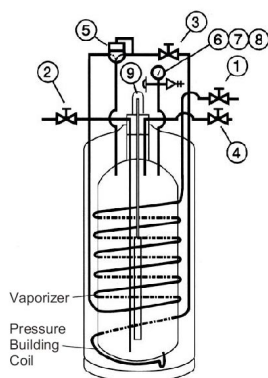
\*\*\*\* NER: Nominal Evaporation Rate

**FIVE Year Vacuum Warranty**

>>>



The Roto-Cal™ gauge features an easy-to-read dial liquid level indicator with swivel head design.



#### Item Plumbing Controls and Function

- 1 **Gas Use Valve** – Used for gas withdrawal
- 2 **Fill / Liquid Valve** – Used for filling or liquid withdrawal.
- 3 **Pressure Control Valve** – Used to turn on/off the pressure control regulator function.
- 4 **Vent Valve** – Used to vent pressure.
- 5 **Combination Pressure Control Regulator** – Used to automatically control operating pressure.
- 6 **Pressure Gauge** – Indicates internal cylinder pressure.
- 7&8 **Dual Pressure Relief Valves** – Used to limit pressure in the liquid cylinder.
- 9 **Liquid Level Gauge** – Used to approximate the liquid contents of the liquid cylinder.