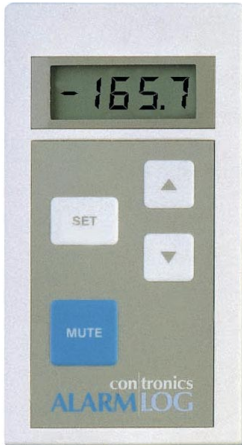




Contronics Alarmlog



The Alarmlog is a single channel, battery powered logger with audible alarm and a large clear display.

The Alarmlog takes a measurement every 4 seconds even if your logging interval is 1 hour. It stores the worst case value measured during each logging interval. The time and date of each alarm event or settings change is recorded in a separate event log.

An additional contact input may be used, for example, to generate an alarm if a freezer door is left open.

Alarmlog is connect together to create small multipoint systems and can also be used in systems. A full range of installation accessories make the system simple to install and easy to expand.

The Alarmlog is completely self-contained and doesn't rely on a PC for its operation.

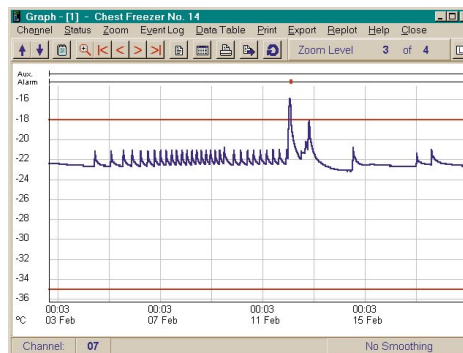
Free Windows PC software displays, analyses, prints and archives your logged data.

PRODUCT SPECIFICATIONS

Alarm log	
(Controller rate) freezer monitoring	
Single point up to 10 points	
Works on 2x Alkaline AA batteries	
One probe covers range	
True continues logging	
Free software + upgrades from website	
Password access control	
Wall-mounting bracket	
Remote alarm	
Speechedialer	
Sensors for:	
- Temperature	
- Oxygen	
- Carbon dioxide	
- Humidity	
- Motion	

System capacity	up to 20 channels
Digital inputs	1 per channel
Resolution	0.1°C
Accuracy	±0.2°C
Temperature range	-200°C to +200°C
Log capacity	3072 readings
Logging interval	1 to 99 minutes

Some sample screen shots



graphical data

Order	Date	Time	Event
058	02 Feb 98	07:53	System Normal
059	04 Feb 98	19:53	System Normal
060	07 Feb 98	07:53	System Normal
061	09 Feb 98	19:53	System Normal
062	12 Feb 98	01:21	Temperature High
063	12 Feb 98	01:22	Alarm Cleared - Local
064	12 Feb 98	01:36	Temperature High
065	12 Feb 98	04:18	Alarm Cleared - Local
066	12 Feb 98	07:53	System Normal
067	14 Feb 98	19:53	System Normal
068	17 Feb 98	07:53	System Normal
069	19 Feb 98	19:53	System Normal
070	22 Feb 98	07:53	System Normal
071	24 Feb 98	19:53	System Normal
072	27 Feb 98	07:53	System Normal

event log